



FEB 24 2004



OVERSIZE LOAD











The Working Load Limit (WLL) is the *maximum load in pounds* that should be applied to new and used tie downs that are in good condition.

27' (8.2M) x **2"** (5CM)
RATCHET TIE DOWN
WORK LOAD LIMIT 3,300lbs. (1,500kg)
Breaking Strength 10,000lbs. (4,545kg)



1943





Working Load Limit (Pounds)

Chain Link Diameter	<u>30</u>	<u>43</u>	<u>70</u>
1/4	1,300	2,600	3,150
5/16	1,900	3,900	4,700
3/8	2,650	5,400	6,600





Legal and Illegal Repair Links



**How many tie downs do I
need?**

One tie down for articles 5 feet or less in length and 1100 pounds or less in weight.

Two tie downs if the article is 5 feet or less in length and greater than 1100 pounds in weight.

Two tie downs if the article is longer than 5 feet and less or equal to 10 feet in length, irrespective of weight.

Longer than 10 feet, 1 tie down for each 10 feet, plus 1 for left over length.











APR 22 2003

**How much working load do I
need in my tie downs?**

**All Tie Downs Must Equal to at
least $1/2$ of Cargo Weight**









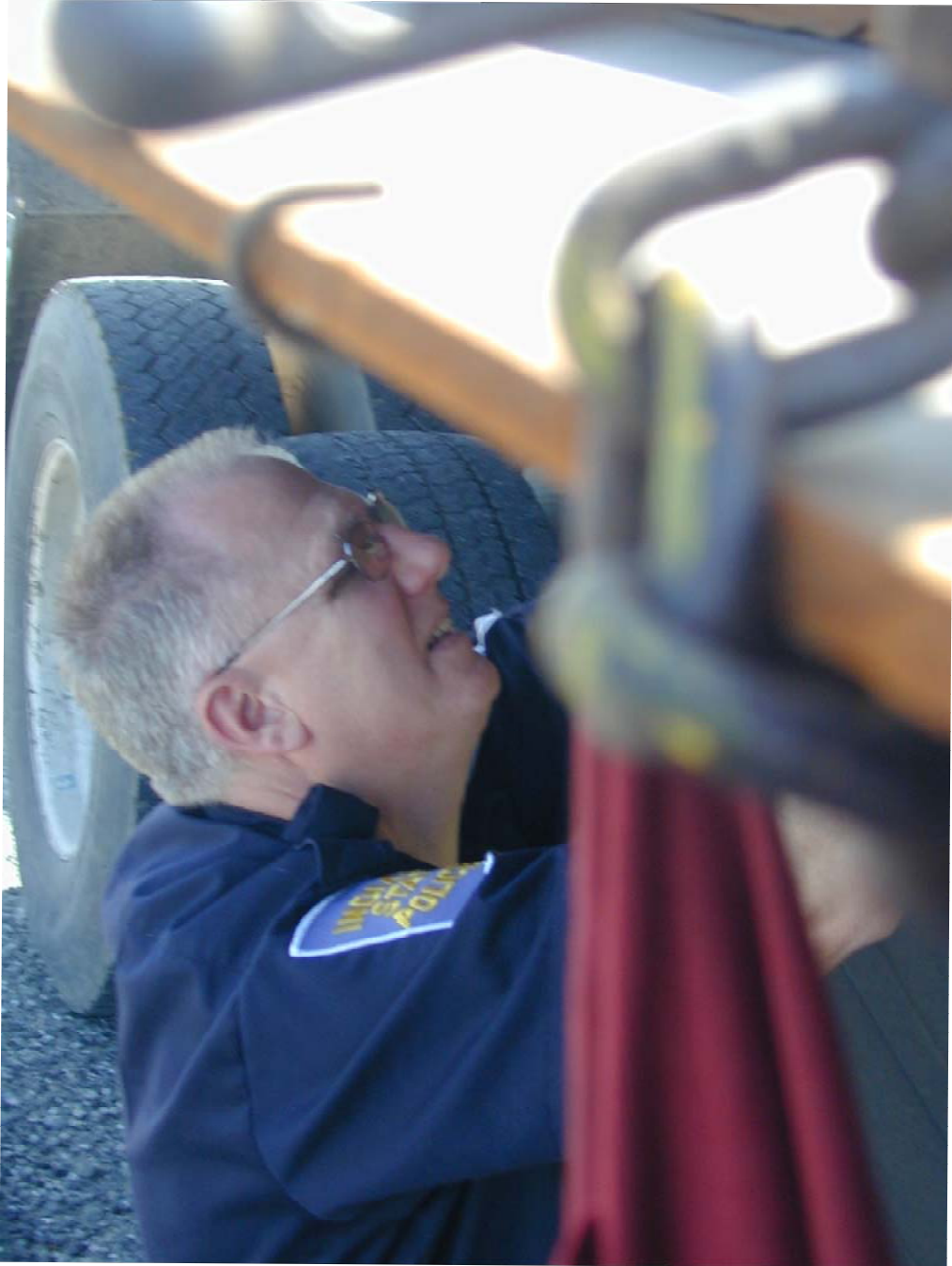








Out-of-Service







Chain Link Diameter	Pounds the Chain Will Secure		
	<u>30</u>	<u>43</u>	<u>70</u>
1/4	1,300	2,600	3,150
5/16	1,900	3,900	4,700







04.26.2006



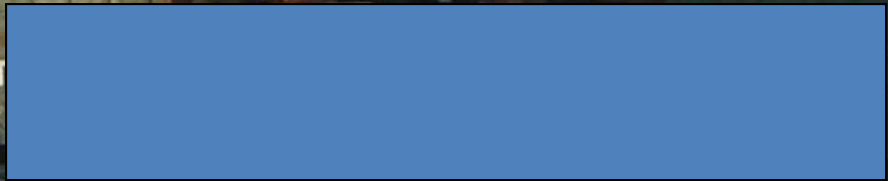




8

ENCORV

MIDWEST



MAY 10 2004

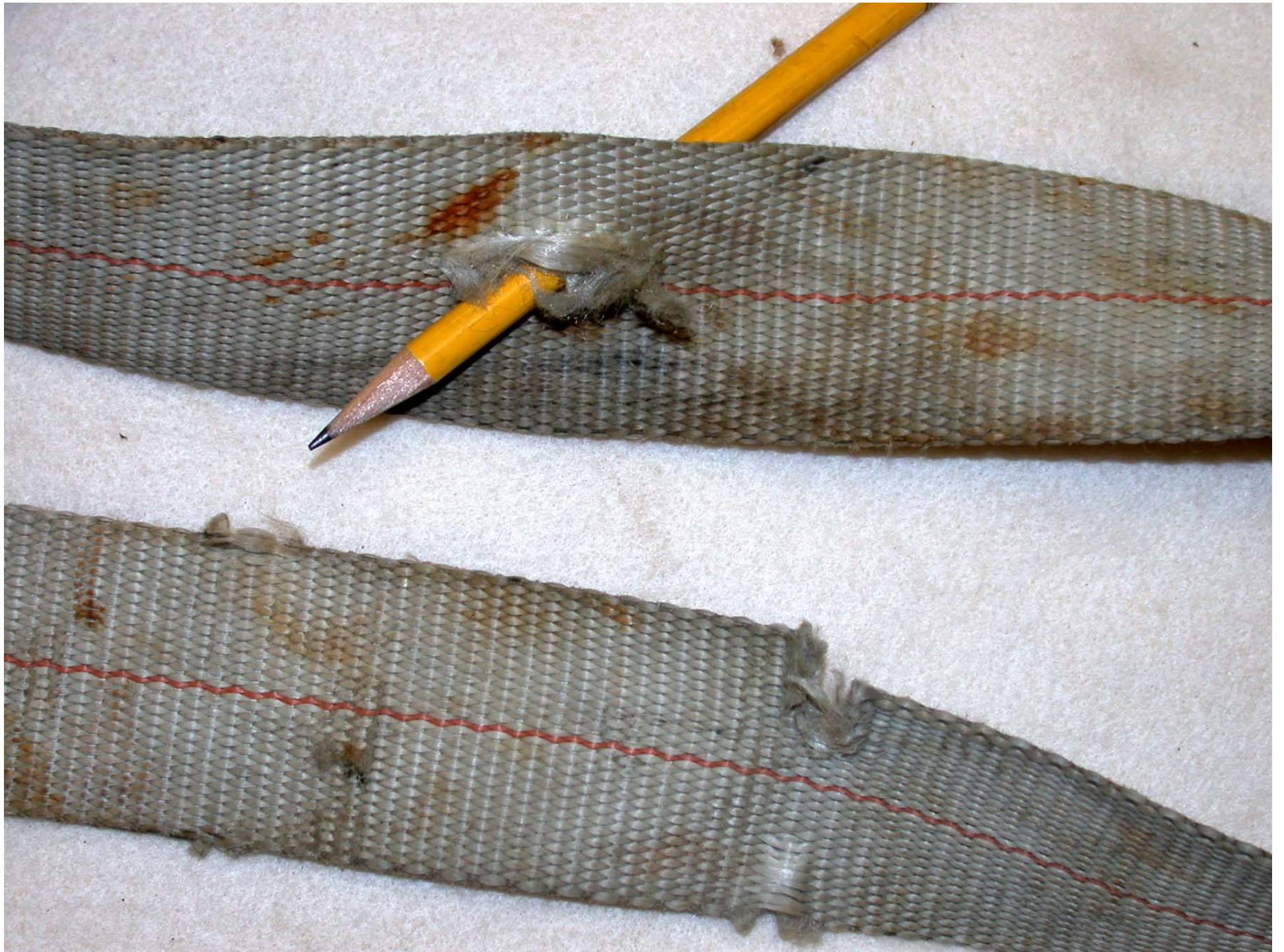












**Take The Time To Secure
Your Load**



